

R05JN

DATE: MARCH 17, 2005

TO: U.S. DISTRIBUTORS

SUBJECT: RECALL R05JN INADVERTENT ENGINE SHUTDOWN

This notice is sent to you in accordance with the requirements of The National Traffic and Motor Vehicle Safety Act.

Blue Bird Corporation has decided that a defect which relates to motor vehicle safety exists in certain 2004 through 2006 model year Blue Bird "Vision" conventional school and non-school buses.

Blue Bird is conducting a recall to correct this defect. Buses with the defect must be modified according to instructions provided with recall R05JN, copy enclosed.

If our records indicate affected units were delivered in your service area, a printout identifying affected units is enclosed. **Distributors should verify correct owners and assure that complete shipping addresses are provided for each listed vehicle.** If you have in your possession or have sold a vehicle that was purchased from another distributor that may be affected by this recall, please notify me at 478-822-2242.

Time required to perform Recall R05JN is eighteen minutes (0.3) hours per bus.

Warranty applications may be submitted to Blue Bird ClaimTrac (use create campaign/bulletin claim).

Federal law requires that any vehicle lessor receiving this recall notice must forward a copy of this notice to the lessee within ten days.

Distributors are reminded of their responsibilities under section 154 of The National Traffic and Motor Vehicle Safety Act of 1991. Dealers are required to complete modifications on units in their inventory before delivering to the final owner. Reference Blue Bird Body Company Distributor Memo No. 42-92.

Important: Your prompt return of the **pink** reimbursement sheet, complete with the correct Body Serial Numbers, permits Blue Bird to update the record indicating recall has been completed and prevents the mailing of a second notice. This is much appreciated. We regret any inconvenience this may have caused.

Questions regarding this recall campaign should be directed to me at (478) 822-2242.

Thank you,

Bill Coleman
Recall Administrator

R05JN

March 24, 2005

Dear Blue Bird Owner:

This notice is sent to you in accordance with the requirements of the National Traffic and Motor Vehicle Safety Act.

Blue Bird Corporation has decided that a defect which relates to motor vehicle safety exists in certain 2004 through 2006 model year Blue Bird "Vision" conventional school and non-school buses.

The defect involves the ignition wiring circuit. If a short occurs in the crossing arm circuit, the 8-way warning light circuit or aftermarket accessories connected at the ignition circuit terminal, it can cause the MOSFET (a heavy duty transistor with built in circuit protection) to trip resulting in an inadvertent engine shutdown. An inadvertent engine shutdown could result in the vehicle coming to a stop in a potentially hazardous location which could result in a vehicle crash causing injury or death to occupants. **REGARDLESS OF WHETHER OR NOT YOU HAVE ANY SUCH OPTIONS, THE CIRCUIT MUST BE MODIFIED.**

Blue Bird is conducting a recall to correct this defect. Buses with this defect must be modified according to the enclosed instructions.

Your Blue Bird bus(es) affected by this recall are identified by body serial number(s) on the enclosed reply sheets.

If you no longer own the subject bus(es), please complete the appropriate section of the **pink** reply sheet and return to Blue Bird in the enclosed pink postage prepaid envelope.

To receive parts required to correct this condition return the yellow parts request sheet in the pink self addressed postage prepaid envelope.

A qualified technician should perform this modification or you may contact your Blue Bird distributor for assistance. Reimbursement for labor may be obtained by completing the **pink** request for reimbursement sheet provided and returning it to Blue Bird in the enclosed **pink** postage prepaid envelope. Labor time required to perform recall R05JN is eighteen minutes (0.3) hours per bus.

If the modifications directed by this notification were performed on your bus prior to the receipt of this recall notification, complete and sign the recall reply sheet and attached a copy of the work order/invoice. Mail the documents in the **pink** self-addressed postage paid envelope included with the recall notification to Blue Bird for warranty consideration. Reimbursements will be made in accordance with the requirements of the National Highway Transportation Safety Act, Title 49 Code of Federal Regulations, Parts 573 and 577.

Federal law requires that any vehicle lessor receiving this recall notice must forward a copy of this notice to the lessee within ten days.

If Blue Bird Body Company should fail to or is unable to remedy this condition without charge to you, you may contact:

**ADMINISTRATOR
NATIONAL HIGHWAY TRAFFIC SAFETY ADMINISTRATION
400 SEVENTH STREET, SW
WASHINGTON, D.C. 20590**

Or, you may call The National Highway Traffic Safety Administration toll free at:

1-888-327-4236

Questions regarding this recall campaign should be directed to me at (478) 822-2242.

Thank you,

Bill Coleman
Recall Administrator
BLUE BIRD CORPORATION



Inadvertent Engine Shutdown

MODELS AFFECTED: All Blue Bird Visions delivered through March 01, 2005

RECALL

R05JN
RECALL CAMPAIGN

ISSUE

Possibility exists for a short in the crossing arm magnet or 8-way warning light system to cause a MOSFET (circuit protection device) in the Multiplex module to trip, shutting down the engine. This may also occur on non-school bus units if aftermarket accessories are wired to the ignition circuit terminal.

CORRECTIVE ACTION

On school bus units, this procedure relocates crossing arm and 8-way warning light circuits to a separate breaker-protected circuit. On both school bus and non-school bus units, a hot wire between the body connector and terminal block is removed.

PROCEDURE

1 Park the bus on a level surface. Remove the ignition key, and chock the rear wheels. Disconnect the batteries.

2 Open the body electrical panel door and locate the terminals shown below:

3 Completely remove the wire labeled 1168 as follows:

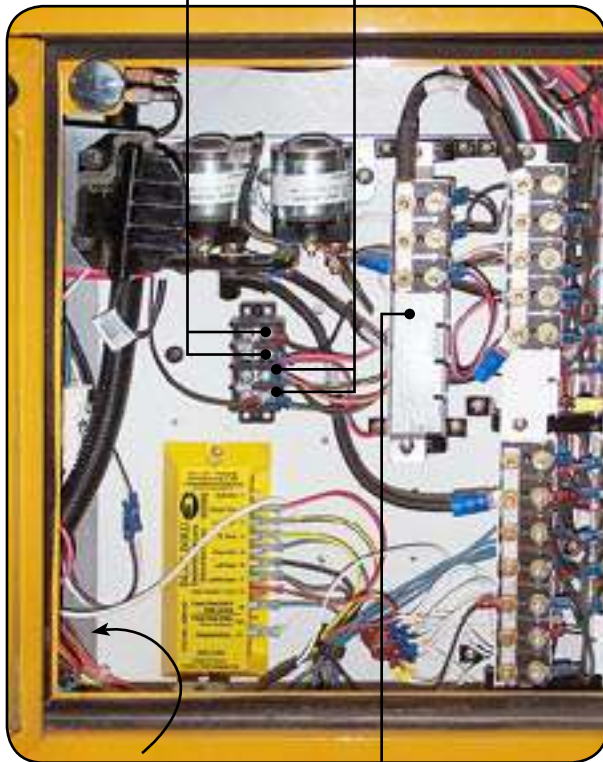
3.1 Locate the body harness connector block near the lower front corner of the panel. Locate the pink wire with black tracer, labeled 1168.

T/S 1 Terminal Block

The wire numbered 1168 will be entirely removed from the harness and discarded.

All other wires connected to these two terminals will be relocated to a new breaker.

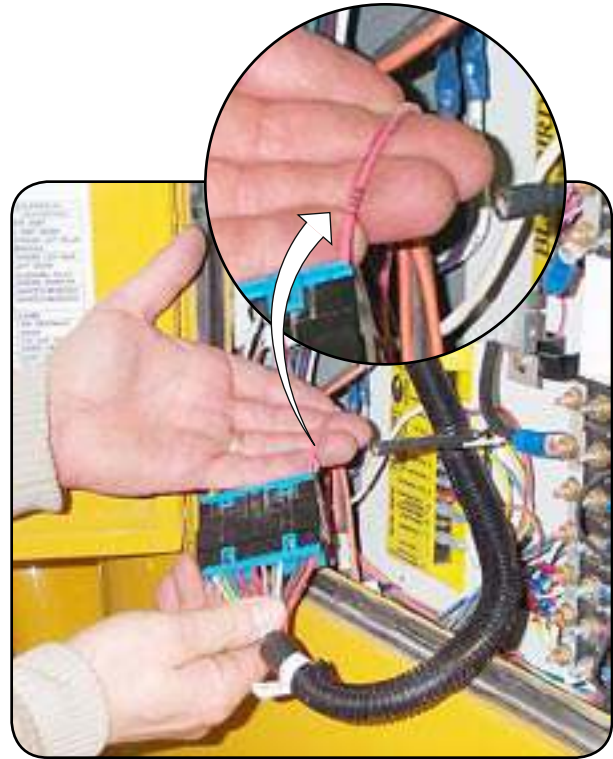
The bottom two terminals of the Terminal Block will not be altered.



The Body Harness Connector affected in this procedure is tucked behind the left bottom corner of the panel door post.

Circuit Breaker Bracket

New breaker will be installed here, with relocated accessory wires attached.



3.2 Disconnect the body harness connector. Remove the wire retainer which secures the 1168 wire.



3.3 Using a small screwdriver, mechanic's pick, or other suitable instrument, depress the internal clip which retains the 1168 wire's end terminal. Remove the terminal from the connector block.



Wire 1168 removed from body harness connector.



3.4 Clip the terminal pin off the end of the removed wire. Then pull the wire from the terminal strip end to remove it from the wiring bundle. With the wire completely free, remove its ring terminal from the ignition terminal block and discard the wire.



Clip the terminal pin off the removed wire. . .

. . . pull wire out from opposite end. . .



. . . remove from terminal block and discard the wire.

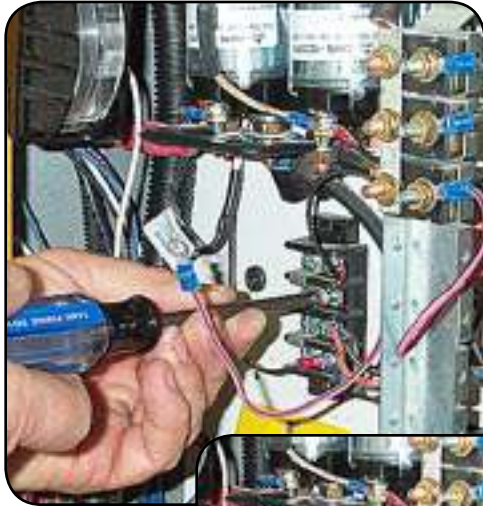


This completes the modification for non-school bus units if there are no other accessory circuits connected to the T/S 1 Terminal Block. For non-school buses, proceed to step 7 to finish. For school buses, or for non-school buses with additional optional equipment circuits, proceed to step 4.



RECALL

4 On school buses, the two top terminals of the T/S 1 Terminal Block may have additional wires attached, depending upon optional equipment installed. Disconnect any wires from these two terminals and route them behind the Circuit Breaker Bracket as shown:



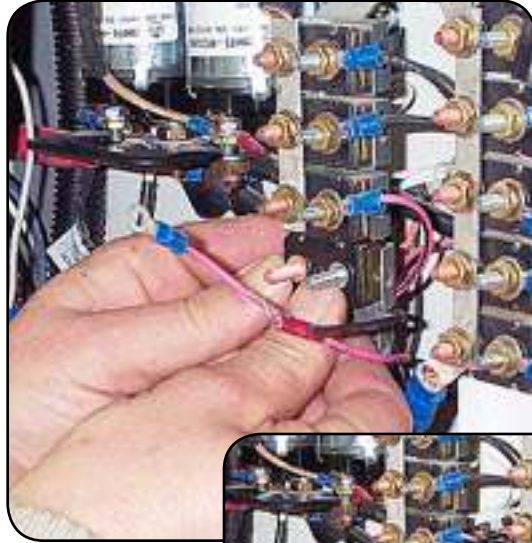
Remove all wires from the top two terminals...



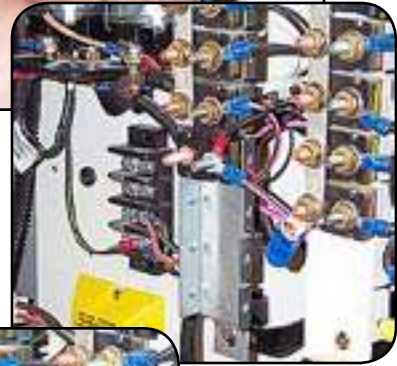
...and route them behind the Circuit Breaker Bracket.



5 Mount a new 15 amp breaker (2006104) in the first available slot of the Circuit Breaker Bracket, with the copper coated stud (labeled "Bat") toward the front of the vehicle. Attach all of the relocated wires from step 4 to the new breaker's silver colored stud (labeled "Aux"):



Install a new 15 amp breaker. Install all wires removed in step 4.



Install plain washer, lock washer, and nut.



Tighten securely with wires spread radially to avoid stacking of the crimped ends.



R05JN

RECALL CAMPAIGN

6 Install a new hot bar connector (2006096) to bridge the new breaker with the breaker above it:



Remove nut from left (hot side) terminal of the first breaker above the new breaker.

Install hot connector bar (2006096).



Install plain washer, lock washer, and nut. Tighten securely.

7 Reconnect body harness and place it back in its original position. Close door and reconnect batteries.

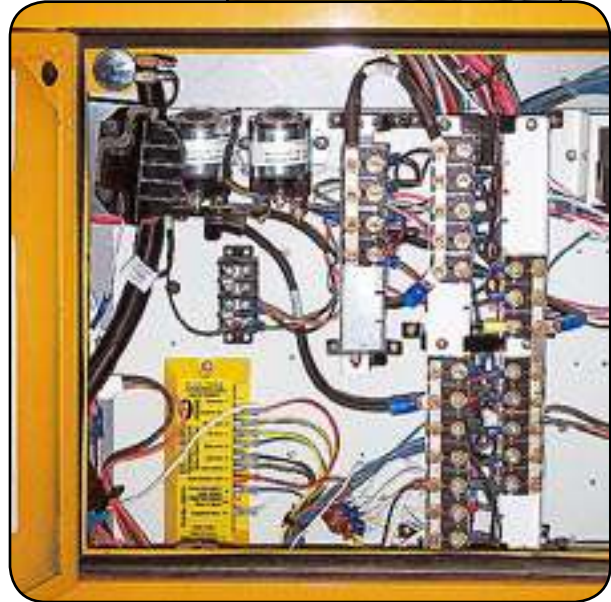


Reconnect body harness.

Replace harness connector in original position at lower left of panel.



Finished modification.



8 Confirm proper operation of the crossing arm magnet, 8-way warning light system, and any other accessory circuit which was relocated in this procedure.

PART NUMBER	QUANTITY	DESCRIPTION
2006104	1	Breaker, Circuit, 15 amp
2006096	1	Bar, Bus, Switch Panel.
2001105	2	Washer, Flat
2001162	2	Lock Washer, Split Ring
0973404	2	Nut, Hex, Brass